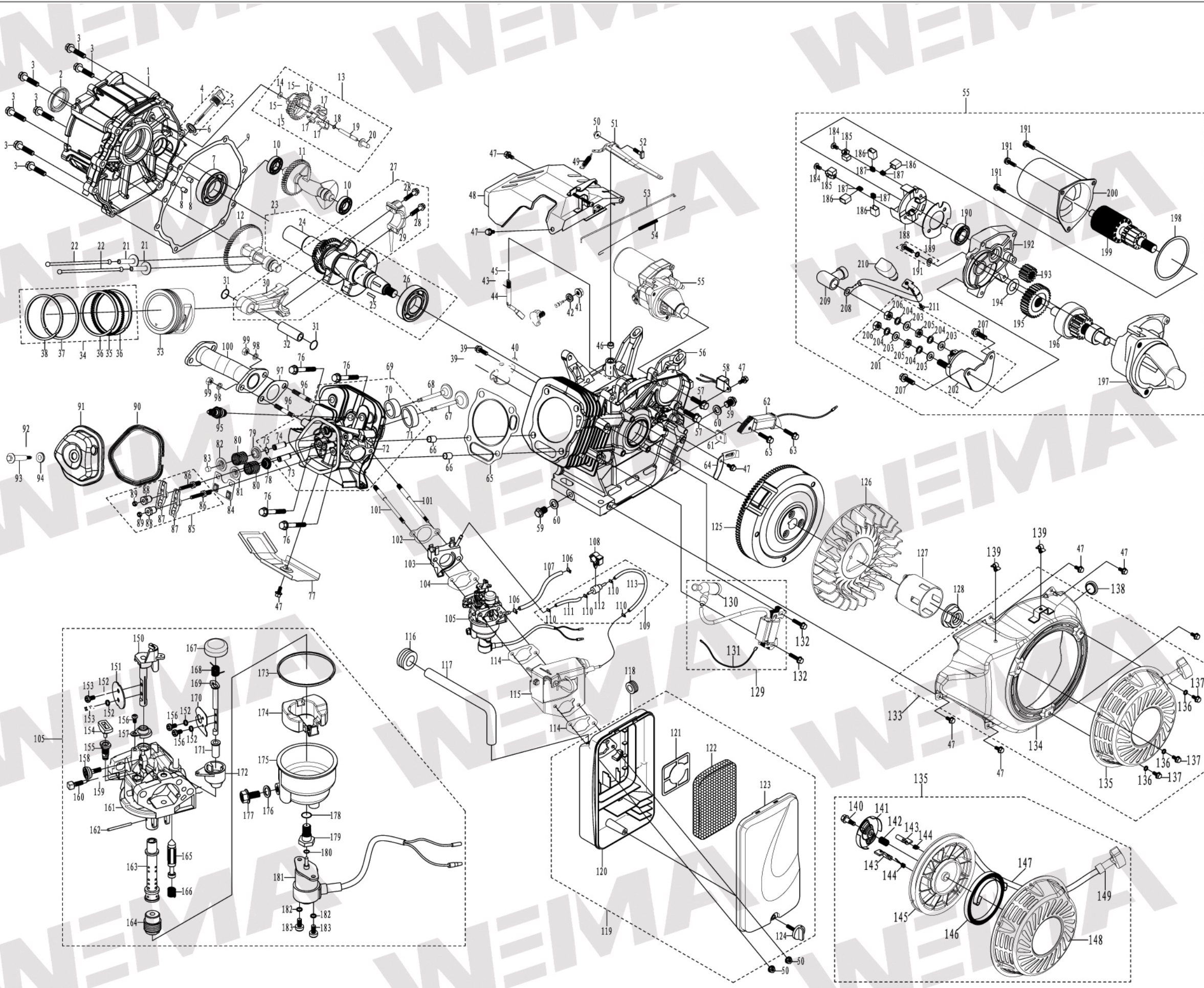


# WM190FE/P机组动力爆炸图



序号	零件编号	名称Description	数量	序号	零件编号	名称Description	数量		
NO.	Part NO.	Chinese	English	QTY.	NO.	Part NO.	Chinese	English	QTY.
1	11.005.018.0253	曲轴箱盖	COVER, CRANKCASE	1	70	11.003.017.9006	排气门座圈	VALVE SEAT, EX	1
2	12.016.002.0702	油封	OIL SEAL	2	71	11.003.017.9005	进气门座圈	VALVE SEAT, IN	1
3	12.002.013.0552	螺栓 GB/T5789/M8*10	BOLT GB/T5789/M8*10	7	72	11.003.017.9008	汽缸头	CYLINDER HEAD	1
4	11.005.009.0204	机油尺组合	DIPSTICK ASSY	1	73	11.003.017.9003	进气门导管	GUIDE, IN. VALVE	1
5	11.005.009.9008	机油尺	DIPSTICK	1	74	11.003.017.9004	排气门导管	GUIDE, EX. VALVE	1
6	11.005.009.9009	机油尺密封圈	DIPSTICK SEALING RING	1	75	11.003.017.9007	气门导管卡圈	CLIP, VALVE GUIDE	1
7	12.009.001.0211	轴承 GB/T276/6207	BEARING GB/T276/6207	1	76	12.002.013.0220	螺栓 GB/T5789/M10*80	BOLT GB/T5789/M10*80	4
8	12.015.002.0051	定位销 φ8*14	PIN, DOWEL, φ8*14	2	77	11.010.001.0251	挡风罩	WINDSHIELD	1
9	11.005.021.0201	曲轴箱密封垫	GASKET, CASE COVER	1	78	11.004.001.0101	挡油罩	VALVE SEAL	1
10	12.009.001.0211	轴承 GB/T276/6207	BEARING GB/T276/6207	2	79	11.004.011.0001	气门弹簧下座	BELOW SEAT of Valve SPRING	1
11	11.004.008.0001	平衡轴部件	WEIGHT, BALANCER	1	80	11.004.009.0151	气门弹簧	SPRING, VALVE	2
12	11.004.019.0301	凸轮轴总成	CAMSHAFT ASSY	1	81	11.004.003.0151	进气门弹簧座	INTAKE VALVE SPRING SEAT	1
13	11.012.009.0601	调速从动齿轮组 7.7g	GOVERNOR KIT, 7.7g	1	82	11.004.005.0151	排气门弹簧座	EXHAUST VALVE SPRING SEAT	1
14	11.012.009.9031	调速齿片	WASHER, SLAVE GEAR GOVERNOR	1	83	11.004.006.0101	气门调节阀	ADJUSTER, EX. VALVE	1
15	11.012.009.9029	飞块销	PIN, GOVERNOR WEIGHT	1	84	11.004.022.0052	推杆支架	PLATE, PUSH ROD GUIDE	1
16	11.012.009.9030	调速齿轮	GOVERNOR GEAR	1	85	11.004.017.0101	气门摇臂组合	ARM ASSY, VALVE ROCKER	2
17	11.012.009.9032	飞块 7.7g	WEIGHT, GOVERNOR 7.7g	1	86	11.004.017.9006	气门摇臂定位螺栓	BOLT, PIVOT	2
18	11.012.009.9026	卡圈	CLIP	1	87	11.004.017.9005	气门摇臂	ARM, VALVE ROCKER	2
19	11.012.009.9027	调速齿轴	SHAFT, GOVERNOR	1	88	11.004.017.9003	气门摇臂螺母	ADJUSTING NUT, VALVE	2
20	11.012.009.9025	调速轴	SLIDER, GOVERNOR	1	89	11.004.017.9004	气门摇臂锁紧螺母	NUT, PIVOT LOCKING	2
21	11.004.015.0201	气门挺柱	LIFTER, VALVE	2	90	11.003.016.0303	汽缸头盖密封垫	GASKET, CYLINDER HEAD COVER	1
22	11.004.021.0301	推杆	ROD, PUSH	2	91	11.003.017.0201	汽缸头盖组合	CYLINDER HEAD COVER COMP.	1
23	11.006.014.0700	曲轴部件	CRANK SHAFT ASSY	1	92	11.003.027.0001	汽缸头盖螺栓组合	CYLINDER HEAD BOLT COMP.	1
24	11.006.014.9013	曲轴	CRANK SHAFT	1	93	11.003.027.9001	汽缸头盖螺栓	BOLT, CYLINDER HEAD COVER	1
25	11.006.014.9008	半圆键	SPECIAL WOODRUFF KEY	1	94	11.003.027.9002	汽缸头盖螺栓密封圈	WASHER, CYLINDER HEAD COVER BOLT	1
26	12.009.001.0211	轴承 GB/T276/6207	BEARING GB/T276/6207	1	95	11.008.009.0101	火花塞 F7RTC	SPARK PLUG F7RTC	1
27	11.006.007.0301	连杆部件	CONNECTING ROD ASSY	1	96	12.015.026.0001	排气双头螺栓 M8*35	BOLT, STD. M8*35	1
28	11.006.007.9003	连杆螺栓	BOLT, CONNECTING ROD	2	97	11.002.004.0102	排气口垫	AIR EXHAUST WASHER	1
29	11.006.007.9002	连杆盖	CONNECTING ROD COVER	1	98	12.006.008.0030	弹簧垫圈 GB/T93 8	SPRING WASHER GB/T93 8	2
30	11.006.007.9001	连杆杆	CONNECTING ROD	1	99	12.001.001.0020	1型六角螺母 GB/T6170/M6	NUT GB/T6170/M6	2
31	11.006.006.0201	活塞销挡圈	CLIP, PISTON PIN	2	100	11.002.001.0202	排气管	EXHAUST PIPE	1
32	11.006.005.0201	活塞销	PIN, PISTON	1	101	12.015.025.0361	进气双头螺栓 M6-8*110	BOLT, AIR INTAKE STUD, M6-8*110	2
33	11.006.003.0301	活塞	PISTON	1	102	11.001.009.0051	进气口垫	AIR INTAKE WASHER	1
34	11.006.004.0351	活塞环组合	PISTON RING ASSY	1	103	11.001.004.0071	隔热板	INSULATOR PLATE	1
35	11.006.004.9029	衬环	BUSH RING	1	104	11.001.005.0051	化油器垫	PACKING, CARBURETOR	1
36	11.006.004.9028	片环	FILM LOOP	1	105	11.009.006.0351	化油器总成	CARBURETOR ASSY	1
37	11.006.004.9027	气环二	GAS RING TWO	1	106	11.009.023.0001	油管夹	FUEL TUBE CLAMP	2
38	11.006.004.9026	气环一	GAS RING ONE	1	107	11.009.005.0151	化油器油管 L=190	FUEL TUBE, CARBURETOR L=190	1
39	12.002.013.0160	螺栓 GB/T5789/M6*12	BOLT GB/T5789/M6*12	2	108	11.001.001.0201	塑料线夹	PLASTIC CLIP	1
40	11.005.010.0151	机油传感器	OIL SENSOR	1	109	11.001.021.0001	单向阀组件	SINGLE-TRACK VALVE ASSY	1
41	12.001.005.0057	螺母 GB/T6617 M10	NUT GB/T6617 M10	1	110	11.001.021.9004	卡箍 φ7.2	CLIP φ7.2	4
42	11.005.010.9001	密封圈	SEALING RING	1	111	11.001.021.9002	气管 φ4*φ8*79	PIPE φ4*φ8*79	1
43	11.012.004.0301	调速摆杆锁夹	LOCKER, GOVERNOR ARM SHAFT	1	112	11.001.021.9001	单向阀	SINGLE-TRACK VALVE	1
44	11.012.002.0401	调速摆杆	GOVERNOR ARM SHAFT	1	113	11.001.021.9003	气管 φ4*φ8*130	PIPE φ4*φ8*130	1
45	12.006.014.0131	平垫圈 φ8*φ17*1	PLAIN WASHER φ8*φ17*1	1	114	11.001.012.0031	空滤垫圈	GASKET, AIR CLEANER	1
46	11.012.005.0101	调速摆杆油封 φ8*φ14*5	OIL SEAL φ8*φ14*5	1	115	11.001.018.0001	阻风门调节支架总成	ADJUSTING FRAME ASSY, CHOKE	1
47	12.002.013.0140	螺栓 GB/T5789/M6*12	BOLT GB/T5789/M6*12	8	116	11.001.002.9001	废气管胶卡圈	CLIP, WASTE GAS PIPE	1
48	11.012.023.0504	油门操纵组合	THROTTLE CONTROL ASSY	1	117	11.001.002.0201	废气管	WASTE GAS PIPE	1
49	11.012.010.0701	调速弹簧	GOVERNING SPRING	1	118	11.009.038.0001	油管胶卡圈	RUBBER CIRCLE, FUEL OIL PIPE	1
50	12.001.005.0020	螺母 GB/T6177/M6	NUT GB/T6177/M6	1	119	11.001.016.0201	空气滤清器部件	AIR CLEANER ASSY	1
51	11.012.013.0501	调速支架(臂)	ARM, GOVERNOR	1	120	11.001.016.9062	空滤器底座	AIR CLEANER BASE	1
52	12.002.005.0030	T型螺栓	T-SHAPE BOLT	1	121	11.001.016.9065	滤芯挡板	PLATE, AIR CLEANER ELEMENT	1
53	11.012.018.0401	拉杆	TIE ROD	1	122	11.001.016.9064	滤芯	ELEMENT, AIR CLEANER	1
54	11.012.020.0401	微调弹簧	FINE ADJUSTMENT SPRING	1	123	11.001.016.9063	空气滤清器盖	COVER, AIR CLEANER	1
55	11.007.013.0101	启动电机总成	START MOTOR ASSY	1	124	11.001.016.9053	空滤器螺栓	BOLT, AIR CLEANER	1
56	11.005.022.0354	曲轴箱体	CRANKCASE COMP	1	125	11.008.007.0251	飞轮部件	FLYWHEEL	1
57	12.002.012.0238	螺栓 GB/T16674/M6*35	BOLT GB/T16674/M6*35	2	126	11.010.012.0201	叶轮	FAN, COOLING	1
58	11.008.003.0001	单向导通器	BREAKER, PROTECTIVE	1	127	11.007.006.0201	启动杯	PULLEY, STARTER	1
59	12.002.012.0070	放水螺栓 GB/T16674/M12*1.5*15	BOLT, DRAIN PLUG GB/T16674/M12*1.5*15	2	128	12.001.005.0090	螺母 GB/T6177/M16*1.5	NUT GB/T6177/M16*1.5	1
60	12.006.014.0312	平垫圈 GB/T97/φ12*φ18*2	PLAIN WASHER GB/T97/φ12*φ18*2	2	129	11.008.004.0151	点火器部件	IGNITION	1
61	11.005.020.0001	曲轴箱胶圈	RUBBER RING, CRANKCASE	1	130	11.008.004.9001	火花帽	CAP, IGNITION	1
62	11.008.002.0001	充电线圈	CHARGING COIL	1	131	11.008.004.9002	熄火线	CORD, STOP SWITCH	1
63	12.002.013.0210	螺栓 GB/T5789/M6*30	BOLT GB/T5789/M6*30	2	132	12.002.013.0190	螺栓 GB/T5789/M6*25	BOLT GB/T5789/M6*25	2
64	11.008.012.0101	压线板	PRSS LINE, BOARD	1	133	11.007.009.1137	启动器总成	RECOIL STARTER ASSY	1
65	11.003.014.0301	汽缸头垫	GASKET, CYLINDER HEAD	1	134	11.007.009.9039	挡风罩	FAN COVER	1
66	12.015.002.0110	定位销 φ12*20	PIN, DOWEL, φ12*20	2	135	11.007.008.0802	启动拉盘组合	STARTER COMP, RECOIL	1
67	11.004.002.0251	进气门	VALVE, INLET	1	136	12.006.009.0001	平垫圈 GB/T95 φ6	PLAIN WASHER GB/T95 φ6	3
68	11.004.004.0301	排气门	VALVE, EXHAUST	1	137	12.002.012.0121	螺栓 GB/T16674.1/M6*10	BOLT GB/T16674.1/M6*10	3
69	11.003.017.0201	汽缸头组合	CYLINDER HEAD ASSY	1	138	11.007.009.9030	启动器插头	PLUG, RECOIL STARTER	1
					139	11.005.027.0101	燕子线夹	CLIP	2
					140	11.007.009.9027	中心螺栓	CENTER POSITION BOLT	1
					141	11.007.009.9026	棘爪导板	RATCHET, GUIDE	1
					142	11.007.009.9025	中心弹簧	CENTER POSITION SPRING	1
					143	11.007.009.9024	拉盘棘爪	RATCHET, STARTER	2
					144	11.007.009.9023	棘爪回位拉簧	RETURN SPRING, RATCHET	1
					145	11.007.009.9019	启动器卷簧	REEL, RECOIL STARTER	1
					146	11.007.009.9021	启动器弹簧	SPRING, STARTER RETURN	1
					147	11.007.009.9010	拉绳	ROPE, RECOIL STARTER	1
					148	11.007.009.9025	拉绳外壳	STARTER COVER COMP, RECOIL	1
					149	11.007.009.9029	拉绳手柄	HANDLE, STARTER	1
					150	11.009.006.9003	节气门轴	THROTTLE VALVE PIN	1
					151	11.009.006.9004	节气门板	THROTTLE VALVE BLOCK	1
					152	11.009.006.9005	弹簧垫圈 GB/T93 3	SPRING WASHER GB/T93 3	4
					153	11.009.006.9006	螺钉 M3*6	SCREW M3*6	2
					154	11.009.006.9008	怠速量孔压帽	CAP, IDLE HOLE	1
					155	11.009.006.9116	怠速量孔组件	IDLE HOLE COMPONENT	1
					156	11.009.006.9101	螺钉 GB/T823 M3*6	SCREW GB/T823 M3*6	3
					157	11.009.006.9100	节气门防尘帽	COVER, THROTTLE VALVE	1
					158	11.009.006.9007	怠速限位螺钉	JET SET, PILOT	1
					159	11.009.006.9009	混合比调节螺钉	SCREW ADJUSTING SPRING	1
					160	11.009.006.9009	混合比调节螺钉	SCREW SET, PILOT	1
					161	11.009.006.9113	化油器本体	CARBURETOR MIXTURE CHAMBER BODY	1
					162	11.009.006.9121	浮子销	PIN, FLOAT SET	1
					163	11.009.006.9004	主喷嘴	NOZZLE, MAIN	1
					164	11.009.006.9115	主量孔	JET, MAIN	1
					165	11.009.006.9024	针阀	NEEDLE VALVE	1
					166	11.009.006.9025	弹簧	SPRING	1
					167	11.009.006.9102	阻风门防尘帽	COVER, CHOKE VALVE	1
					168	11.009.006.9103	阻风门限位拉簧	SPRING, CHOKE VALVE RETURN	1
					169	11.009.006.9104	阻风门轴	CHOKE VALVE PIN	1
					170	11.009.006.9105	阻风门板	CHOKE VALVE BLOCK	1
					171	11.009.006.9106	衬套	LINING	1
					172	11.009.006.9107	阻风门臂	ARM, CHOKE VALVE	1
					173	11.009.006.9029	浮子室密封圈	WASHER	1
					174	11.009.006.9028	浮子	FLOAT SET	1
					175				